

Rigid gas permeable contact lenses

appenzeller
kontaktlinsen®
passt.

i-NIGHT

Orthokeratology at the highest level



Wear overnight – see during the day:
Without spectacles,
without contact lenses.

info@appenzeller-kontaktlinsen.ch
www.appenzeller-kontaktlinsen.ch



passt.

Content

- 3 *i*-NIGHT
If you want to know more
- 5 *i*-NIGHT
Ortho-K Lens
- 7 *i*-NIGHT *Toric*
Toric Ortho-K Lens
- 9 *i*-NIGHT *Multi*
Multifocal Ortho-K Lens
- 11 *i*-NIGHT *Toric Multi*
Toric multifocal Ortho-K Lens
- 13 *i*-NIGHT
Fitting guide
- 15 *i*-NIGHT
Conditions: Spare lenses – at 50 % discount
- 16 *i*-NIGHT
Short and sweet: The most important
- 18 Comfort and safety
Our recommendation for the care regime
of rigid gas permeable contact lenses

i-NIGHT

If you want to know more

→ The Ortho-K effect is based on the difference in thickness of the tear film profile between the back surface of the lens and the front surface of the cornea.

The lenses ...

... are «touching» in the centre,
... vaulting in the mid-periphery and
... touching again in the corneal periphery

This results in a typical fluorescence pattern

- with central «touch»
- with fluorescein ring in the mid-periphery
- with peripheral alignment

The adhesion and capillary forces due to the differences in thickness of the tear film profile cause tensile forces in the area of the tear film reservoir.

The consequence

The corneal shape will be ...

... flatter in the centre → myopia is corrected as desired,
... steeper in the mid-periphery

The corneal thickness in the mid-periphery increases due to the traction force. The thickness changes through compression of the cells and by fluid exchange between the epithelial cells. Other factors are the accelerated cell divisions and accelerated cell renewal.

→ Myopia and Ortho-K lenses: What is the connection?

Myopia is increasing

In Asia, around 90% of all students are short-sighted. Myopia has also increased significantly in the rest of the world. The causes have not yet been scientifically proven. It is possible that there is a connection between the increasing technological development and the resulting increase in near-work

The axial growth of the eye can be slowed down:

Myopia progression should be limited. This is the goal experts all over the world have in mind: Orthokeratology contributes to achieving this goal.

Studies show that orthokeratology can slow axial length growth of the eye.

Field tests in comparison

One group of children was fitted with Ortho-K lenses. Another group of children wore normal RGP lenses, soft lenses or spectacles. The increase in axial length of the eyes was about 40% less in the «Ortho-K lenses» group. That proves: Ortho-K lenses can slow the growth of the axial length of the eye.

→ How do you fit Ortho-K lenses optimally?

From case to case: the right lenses

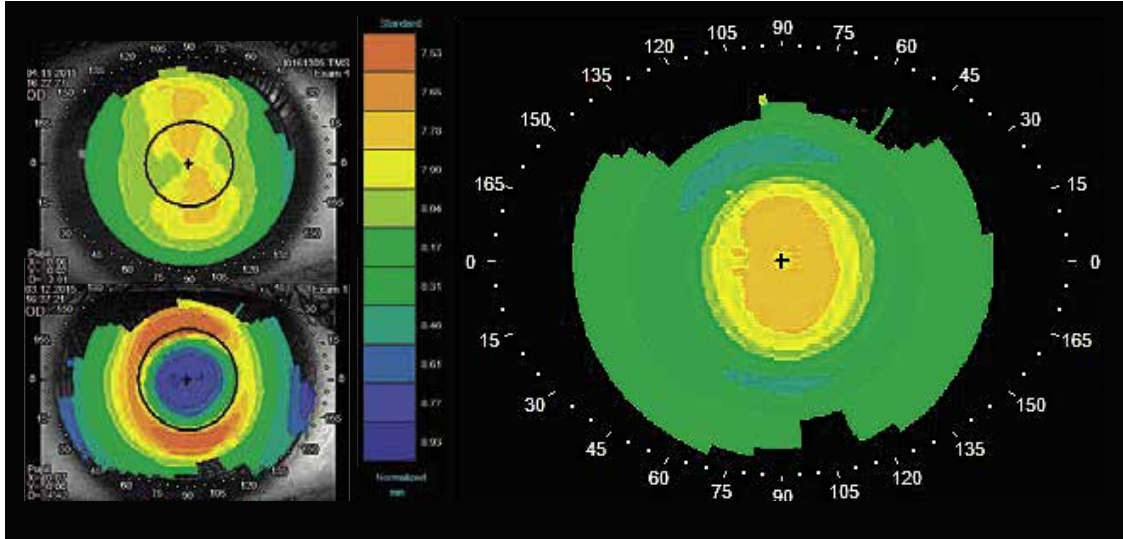
When fitting the i-NIGHT Ortho-K lens, the topography and refractive data of your patient are relevant. Also, the resulting contact lens parameters. Key are the follow-ups: Check the fit of the lens and also the changes in the cornea at short intervals to begin with.



passt.

i-NIGHT

If you want to know more



Imaging of the corneal change (on the right): top left = before Ortho-K lens; bottom left = after Ortho-K lens.

→ Our schedule with consultation, case history and measurements

Lens dispensing

Check

After the first night

Follow-up → in the morning, lenses in the eye

After 3–5 nights

Possibly follow-up → in the morning, lenses in the eye

After 1 to 2 weeks

Follow-up → in the morning

After approx. 1 month

Follow-up → in the morning
Measurement of the regression
→ in the evening

Finalisation of the fitting

Dispensing of spare lenses

6-monthly (at least)

After-care

After 1 year

Replace lenses

→ How do you evaluate the fluorescein pattern?

Similar to normal aspheric lenses:

- If you ignore the bright peripheral ring, you get an image similar to

that obtained by fitting aspheric lenses in perfect alignment.

- No fluorescein should be visible in the centre → the thickness of the tear layer must be thin → so that adhesion forces work optimally.

Is the tear layer too thick in the centre?

In this case, a so-called «central island» can appear in the topography → the centre is not yet evenly flattened.

How to evaluate the transition from the landing zone to the bevel?

Like a normal aspheric lens.

→ How long are Ortho-K lenses worn? How are they cared for?

Wearing time

Recommendation: annual replacement.

Care regime

Like other rigid gas permeable lenses. For manual surface cleaning: an alcohol based cleaner, e.g. Appenzeller Kontaktlinsen Cleaner. For wetting

before inserting the lens, it is the best to use preservative free saline solution. For storage and disinfection: preferably a peroxide system.

→ Materials

For the manufacturing of i-NIGHT Ortho-K lenses we use the high Dk material Boston XO (DK 100). On request, i-NIGHT Ortho-K lenses are also available in other materials.

→ Tints

To distinguish between right and left lens, you can choose between five tints:

- Red
- Violet
- Aqua
- Blue
- Green

If you do not make a choice when ordering, we will deliver the standard version:

- right contact lens: red
- left contact lens: violet

i-NIGHT

Ortho-K Lens

The i-NIGHT Ortho-K Lens is used for all spheric or low toric (<0.3mm corneal radius difference) corneas. We calculate and manufacture the lens individually according to the topography and refractive data of your patient.

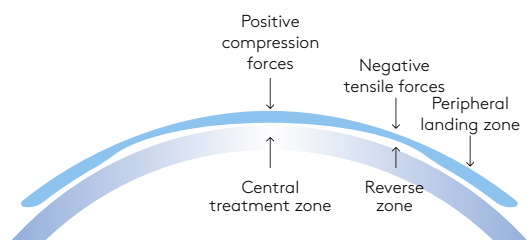
→ Back surface design

- Rotationally symmetric, reverse back surface design
- The diameter of the central treatment zone varies with the amount of myopia to be corrected (see table), but can be ordered individually.

Myopia in diopters (BVD 0 mm)	Ø central treatment zone
Up to -4.0 D	6.5 mm
-4.125 D to -5.5 D	6.0 mm
From -5.625 D	5.5 mm

→ Target group

- Correction of myopia from -0.75 D to -6.0 D → higher myopia on request
- Corneal astigmatism up to approx. -1.25 D or up to 0.3 mm central corneal radius difference
- Wish for free, sharp and comfortable vision without glasses or contact lenses
- Contact lens related dry eyes
- Reservations regarding the correction of myopia with LASIK
- Slowing the progression of myopia in children



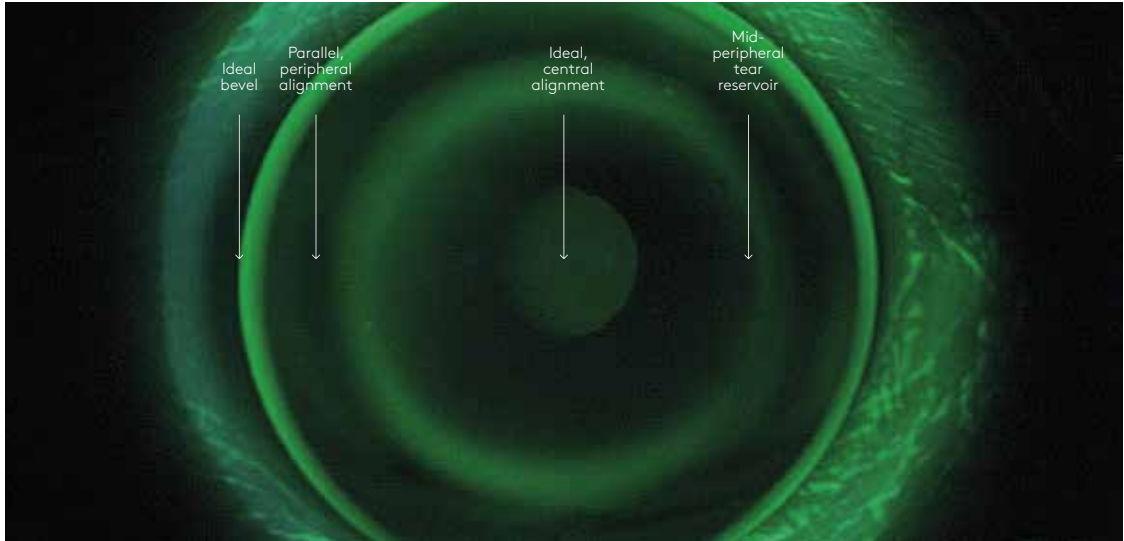
Functionality and geometrical description of the back surface.



passt.

i-NIGHT

Ortho-K Lens

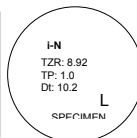
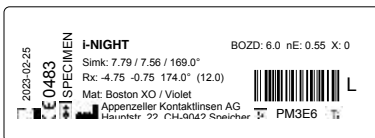


Fluorescein pattern for an ideal fit of the i-NIGHT Ortho-K Lens.

→ Information on the label



Our labels contain all relevant information. So that you have an overview during the entire fitting. Example of a label:



Parameter Description

Simk	Central corneal radii: flattest/steepest axis of the flattest radius
Rx	Refraction
TZR	Treatment Zone Radius → Radius of the central treatment zone calculated from the refraction and the flattest central corneal radius
TP	Target Power → Target value of the refraction and power of the contact lens
BOZD	Back Optic Zone Diameter → Diameter of the central treatment zone
nE	numerical eccentricity
X	modifies the central touch at the same TZR (see above) and indicates the deviation of the sagittal height from the standard calculation
Dt	Diameter total → Total diameter of the contact lens

→ Ideal fit

In order for the i-NIGHT to be fully effective, the lens must ...

... be centred in relation to the pupil during sleep. This is verified by the tangential map of your topographer ... show the typical fluorescein pattern as above.

→ Ideal fluorescein pattern

- clearly visible, central alignment without signs of central epithelial defects (corneal opacities)
- highly visible, rotationally symmetric tear reservoir
- parallel and even peripheral alignment
- good tear film exchange at the edge (Bevel)

i-NIGHT *Toric*

Toric Ortho-K Lens

The i-NIGHT Toric Ortho-K Lens is used for corneal radius differences ≥ 0.3 mm. We calculate and manufacture the lens individually according to the topography and refractive data of your patient.

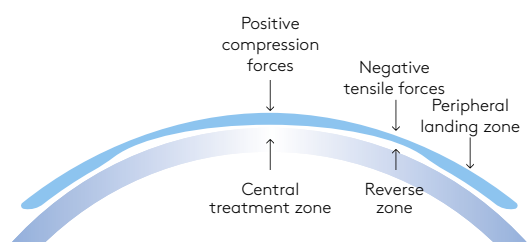
→ Back surface design

- Toric, reverse back surface design
- Spherical central treatment zone
- Toric reverse zone
- The diameter of the central treatment zone varies with the amount of myopia to be corrected (see table), but can be ordered individually.

Myopia in diopters (BVD 0 mm)	Ø central treatment zone
Up to -4.0 D	6.5 mm
-4.125 D to -5.5 D	6.0 mm
From -5.625 D	5.5 mm

→ Target group

- Correction of myopia from -0.75 D to -6.0 D → higher myopia on request
- Corneal astigmatism of approx. -1.5 D to approx. -3.5 D
- With-the-rule and against-the-rule astigmatism, if corneal astigmatism = total astigmatism
- Wish for free, sharp and comfortable vision without glasses or contact lenses
- Contact lens related dry eyes
- Reservations regarding the correction of myopia with LASIK
- Slowing the progression of myopia in children



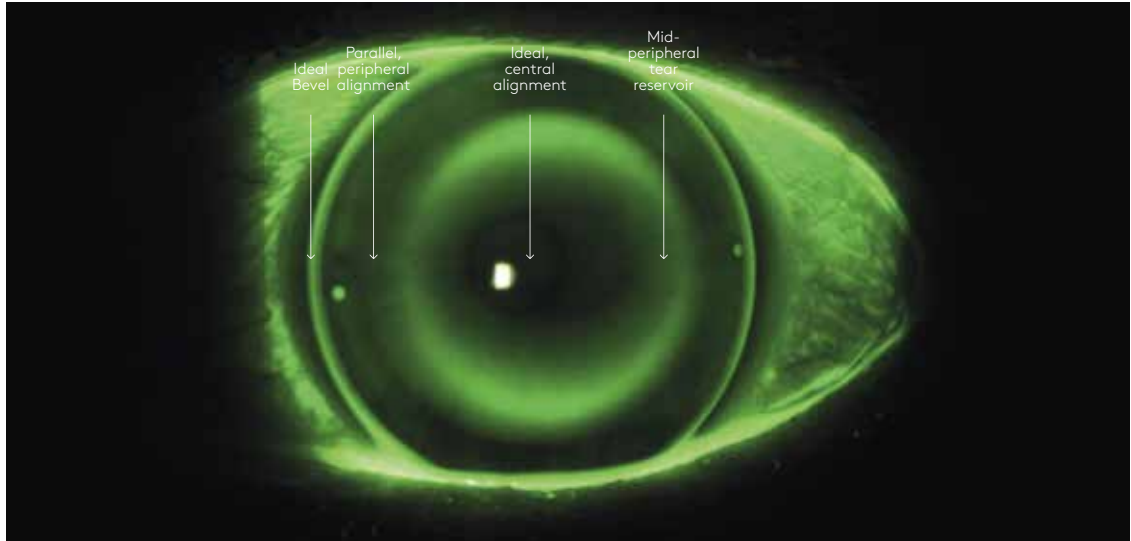
Functionality and geometrical description of the back surface.



i-NIGHT Toric

passt.

Toric Ortho-K Lens

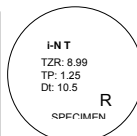
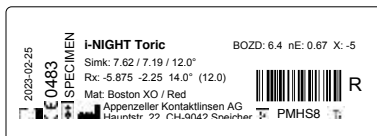


Fluorescein pattern for an ideal fit of the i-NIGHT-Toric Ortho-K Lens.

→ Information on the label



Our labels contain all relevant information. So that you have an overview during the entire fitting. Example of a label:



Parameter	Description
SimK	Central corneal radii: flattest/steepest axis of the flattest radius
Rx	Refraction
TZR	Treatment Zone Radius → Radius of the central treatment zone calculated from the refraction and the flattest central corneal radius
TP	Target Power → Target value of the refraction and power of the contact lens
BOZD	Back Optic Zone Diameter → Diameter of the central treatment zone
nE	numerical eccentricity
X	modifies the central touch at the same TZR (see above) and indicates the deviation of the sagittal height from the standard calculation
Dt	Diameter total → Total diameter of the contact lens

→ Ideal fit

In order for the i-NIGHT Toric to be fully effective, the lens must...

- ... be centred in relation to the pupil during sleep. This is monitored by the tangential map of your topographer
- ... show the typical fluorescein pattern as above.

→ Ideal fluorescein pattern

- clearly visible, central alignment without signs of central epithelial defects (corneal opacities)
- highly visible tear reservoir
- parallel and even peripheral alignment
- for the i-NIGHT Toric the stabilisation markers should be in the axis of the flatter corneal meridian
- good tear film exchange at the edge (Bevel)

i-NIGHT *Multi*

Multifocal Ortho-K Lens

The i-NIGHT Multi Ortho-K Lens is used for all spheric or low toric (<0.3mm corneal radius difference) corneas combined with presbyopia. We calculate and manufacture the lens individually according to the topography and refractive data of your patient.

→ Recommendation

Start the fitting with an i-NIGHT. Switch to the *i-NIGHT Multi* only when stable correction of myopia has been achieved in association with an ideal fit and optimal tolerance. In order for the *i-NIGHT Multi* to be fully effective

in presbyopia correction, the refractive deficit to be corrected must not be less than the reading add. Example: Myopia -1.0 D, addition +1.75 D

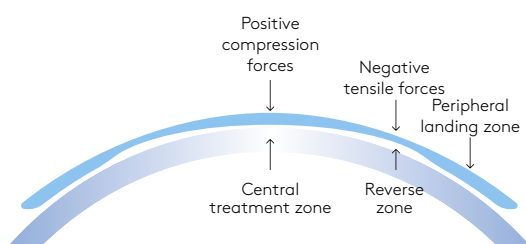
→ Back surface design

- Spherical, reverse back surface design with central near zone
- The diameter of the central treatment zone varies with the amount of the myopia to be corrected (see table), but can be ordered individually.
- The diameter of the central near zone can be selected freely → Recommendation: Start the fitting with a near zone diameter Medium «M»

Myopia in diopters (BVD 0 mm)	Ø central treatment zone
Up to -4.0 D	6.5 mm
-4.125 D to -5.5 D	6.0 mm
From -5.625 D	5.5 mm

→ Target group

- Correction of myopia from -0.75 D to -6.0 D with simultaneous correction of presbyopia → higher myopia on request
- all reading adds → pre-request: refractive deficit ≥ addition
- Corneal astigmatism up to approx. -1.25 D or up to 0.3 mm central corneal radius difference
- Wish for free, sharp and comfortable vision without glasses or contact lenses
- Contact lens related dry eyes
- Reservations regarding the correction of myopia with LASIK



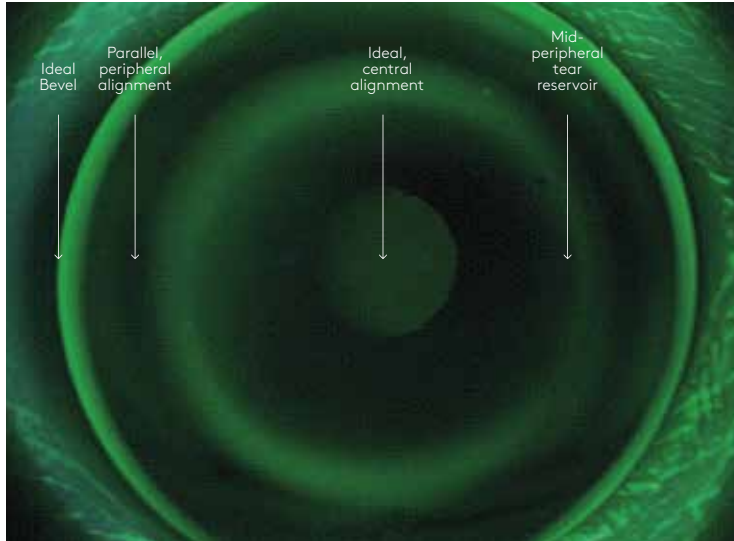
Functionality and geometrical description of the back surface.



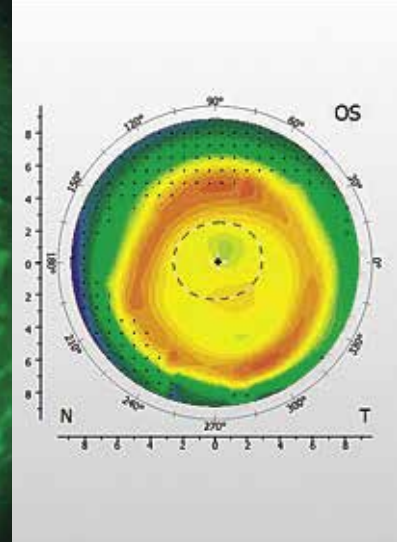
passt.

i-NIGHT Multi

Multifocal Ortho-K Lens



Fluorescein pattern for ideal fit of the i-NIGHT-Multi Ortho-K Lens.

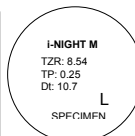


Tangential map of the topographer.

→ Information on the label



Our labels contain all relevant information. So that you have an overview during the entire fitting. Example of a label:



→ Ideal fit

In order for the i-NIGHT Multi to be fully effective, the lens must ...

- ... be centred in relation to the pupil during sleep. This is monitored by the tangential map of the topographer
- ... show a slightly steeper area in the pupil region on the tangential map of the topographer (right picture above)
- ... show the typical fluorescein pattern as above.

→ Ideal fluorescein pattern

- clearly visible, central alignment without signs of central epithelial defects (corneal opacities)
- highly visible, rotationally symmetric tear reservoir
- parallel and even peripheral alignment
- good tear film exchange at the edge (Bevel)

Parameter	Description
SimK	Central corneal radii: flattest/steepest axis of the flattest radius
Rx	Refraction
TZR	Treatment Zone Radius → Radius of the central treatment zone calculated from the refraction and the flattest central corneal radius
TP	Target Power → Target value of the refraction and power of the contact lens
BOZD	Back Optic Zone Diameter → Diameter of the central treatment zone
nE	numerical eccentricity
X	modifies the central touch at the same TZR (see above) and indicates the deviation of the sagittal height from the standard calculation
Dt	Diameter total → Total diameter of the contact lens
ADD	Reading add
NZ	Diameter of the central near zone

i-NIGHT *Toric Multi*

Toric-multifocal Ortho-K Lens

The i-NIGHT Toric Multi Ortho-K Lens is used for corneal radius differences ≥ 0.3 mm combined with presbyopia. We calculate and manufacture the lens individually according to the topography and refractive data of your patient.

→ Recommendation

Start the fitting with an i-NIGHT Toric. Switch to the i-NIGHT *Toric Multi* only when a stable correction of myopia has been achieved in association with an ideal fit and optimal tolerance. In order for the i-NIGHT *Toric Multi* to be fully effective in presbyopia correction, the

refractive deficit to be corrected must not be less than the reading add.

Example: Myopia -1.0 D, addition $+1.75$ D

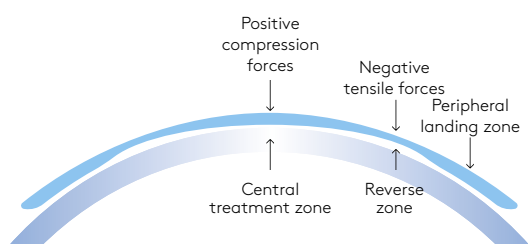
→ Back surface design

- Toric, reverse back surface design
- Spherical central treatment zone with central near zone
- Toric reverse zone
- The diameter of the central treatment zone varies with the amount of myopia to be corrected (see table), but can be ordered individually.
- The diameter of the central near zone can be selected freely → Recommendation: Start the fitting with a near zone diameter Medium «M»

Myopia in diopters (BVD 0 mm)	Ø central treatment zone
Up to -4.0 D	6.5 mm
-4.125 D to -5.5 D	6.0 mm
From -5.625 D	5.5 mm

→ Target group

- Correction of myopia from -0.75 D to -6.0 D with simultaneous correction of presbyopia → higher myopia on request
- all reading adds → condition: refractive deficit \geq addition
- Corneal astigmatism of approx. -1.5 D to approx. -3.5 D
- With-the-rule and against-the-rule astigmatism, if corneal astigmatism = total astigmatism
- Wish for free, sharp and comfortable vision without glasses or contact lenses
- Contact lens related dry eyes
- Reservations regarding the correction of myopia with LASIK



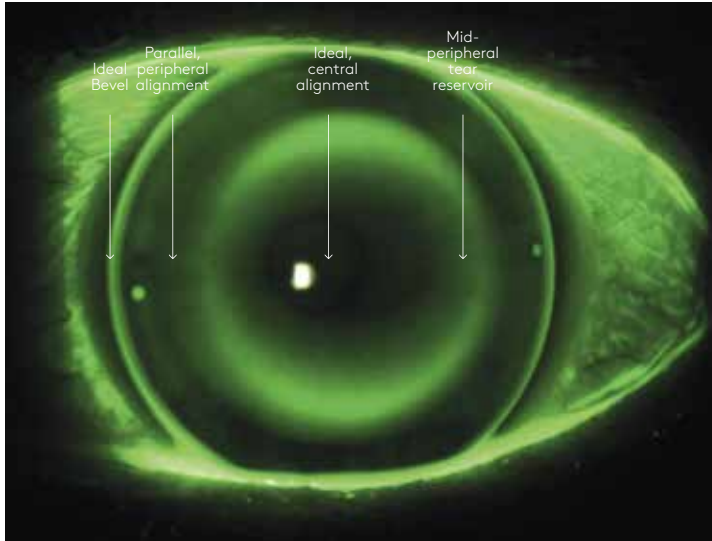
Functionality and geometrical description of the back surface.



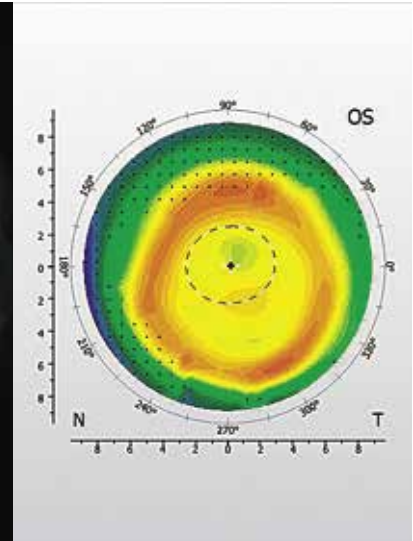
i-NIGHT Toric Multi

passt.

Toric-multifocal Ortho-K Lens



Fluorescein pattern for an ideal fit of the i-NIGHT-Toric-Multi Ortho-K Lens.

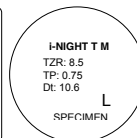
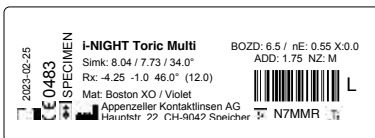


Tangential map of the topographer.

→ Information on the label



Our labels contain all relevant information. So that you have an overview during the entire fitting. Example of a label:



→ Ideal fit

In order for the i-NIGHT Toric Multi to be fully effective, the lens must...

- ... be centred in relation to the pupil during sleep. This is monitored by the tangential map of the topographer
- ... show a slightly steeper area in the pupil region on the tangential map of the topographer (right picture above)
- ... show the typical fluorescein pattern as above.

→ Ideal fluorescein pattern

- clearly visible, central alignment without signs of central epithelial defects (corneal opacities)
- highly visible tear reservoir
- parallel and even peripheral alignment
- for the i-NIGHT Toric Multi the stabilisation markers should be in the axis of the flatter corneal meridian
- good tear film exchange at the edge (Bevel)

Parameter	Description
SimK	Central corneal radii: flattest/steepest axis of the flattest radius
Rx	Refraction
TZR	Treatment Zone Radius → Radius of the central treatment zone calculated from the refraction and the flattest central corneal radius
TP	Target Power → Target value of the refraction and power of the contact lens
BOZD	Back Optic Zone Diameter → Diameter of the central treatment zone
nE	numerical eccentricity
X	modifies the central touch at the same TZR (see above) and indicates the deviation of the sagittal height from the standard calculation
Dt	Diameter total → Total diameter of the contact lens
ADD	Reading add
NZ	Diameter of the central near zone

i-NIGHT

Fitting guide

1. Examination

- comprehensive case history
- subjective, precise refraction
- Topography
- Slit lamp examination of the anterior eye
- HVID

2. Order

Send data from refraction, topography (export file), HVID to:
info@appenzeller-kontaktlinsen.ch



3. Lens dispensing

- Handling of the lenses: insertion with saline solution; fully filled inside of the contact lens and with the head bent forward; instructions for lens care
- Insertion of the lenses, determining of visual acuity and over-refraction
- Follow-up appointment after the 1st night with i-NIGHT lenses (preferably with lenses in the eye)

4. Follow-ups

Follow-ups are always carried out in the morning and at the same time if possible:

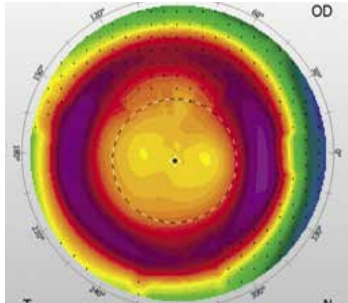
	1st night	3-5 nights	10-14 nights	1 month	6 months	1 year
Visual acuity without lenses						
Subjective refraction without lenses						
Topography						
Slit lamp examination						
Fluorescein pattern with lenses in eye						
Subjective refraction in the evening						
Subjective refraction with lenses						



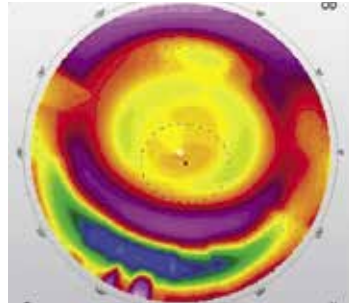
passt.

i-NIGHT

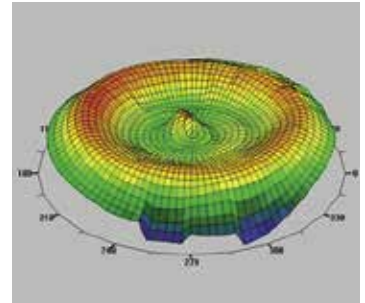
Fitting guide



Bullseye (ideal fitting)



Smiley Face (flat fitting)



Central Island (steep fitting)

5. Modifications

Send data of subjective refraction over the lenses and without the lenses, topography (export file), fluorescein pictures to:
info@appenzeller-kontaktlinsen.ch

6. Care regime

- Cleaning in the morning with a cleaner containing alcohol (e.g. Appenzeller Cleaner)
- Storage preferably in a flat case with storage solution for rigid gaspermeable contact lenses or
- use a peroxid system (with tablet or catalyst)
- Protein removal once a month (Progent)

i-NIGHT Conditions

Spare lenses – at 50% discount.

→ Spare lenses

So you and your patients are double safe

A lens can get lost, or it can break. Both very unpleasant for your patients, and also for you. This is why we recommend a pair of spare lenses for you and your patients. We offer them with 50% discount on the regular price and without right to exchange.

The game rules

- Order within 100 days after delivery of the definite lenses (date of delivery note plus 100 days)
- identical parameters and identical material
- Option free of charge: different material tint – to distinguish the spare lenses from the first set of lenses

→ Return lenses

So you can get the refund:

Please return i-NIGHT Ortho-K lenses to us in any case if you change any parameters during the fitting process.

The reason for this has a name:

Quality assurance management.

→ Return in case of a broken lens

So you can make use of the guarantee:

We give you three full months guarantee on i-NIGHT contact lenses, as for all rigid gas permeable lenses. If you return the lens.

The game rules

Return the broken lens within 3 months (Date of the delivery note plus 3 months).

→ The fitting without trial lenses

So the path is successful from the beginning to the end:

We manufacture the lenses you require from the beginning with Boston XO, a high Dk material. So your patients can wear the lenses at night from the beginning and experience the effect.

→ The leaflet for your patient

So you don't have to say the same thing over and over again

Why contact lenses made to order? Why contact lenses made to order for the night? Why contact lenses made to order for the night by Appenzeller Kontaktlinsen – and by you? Questions over questions. You can spare yourself the answers to a large extent if you hand out our flyer to your patients instead.

Patient leaflet «i-NIGHT: Wear at night – see during the day»

- all important informations about our Ortho-K lenses on 6 pages in A6/5 size



passt.

i-NIGHT

Short and sweet

The most important

→ Orthokeratology?

The Greek word means «to bring the cornea into the right shape».

→ Function?

They are being worn at night. So you can see clearly during the day – without contact lenses. In other words: Myopia is temporarily reduced or eliminated during sleep. This is made possible by rigid gas-permeable contact lenses with a special design. They are centrally flattened according to the required correction and merge into a zone of very steep radii, followed by a peripheral landing zone and terminated by a bevel.

→ Impact?

- 60–70% myopia correction after 1 night
- 100% Correction performance after 3 to 5 nights
- stable after about one month
- totally reversible, non-invasive

→ Target group?

- Short-sighted people up to -6.00 D cyl -3.5 D, who want to see with freedom

- Short-sighted people who have reservations regarding refractive surgery
- Short-sighted contact lens wearers who experience problems with dryness
- Short-sighted children → as a preventive measure against the progression of myopia

The eyes should be healthy in any case, and the corneal topography should not show any abnormalities.

→ History?

Ortho-K lenses have existed since the 1960s. At that time, attempts were made to change the corneal shape with flat-fitted PMMA lenses. This was usually only possible by numerous lens modifications.

→ What is new?

- New findings: extensive basic research and extensive experience around the world
- New materials: Development of highly gas-permeable rigid lens materials
- New designs: Development of multi-curve, reverse designs
- New manufacturing technologies: IT-based SML manufacturing processes
- New Corneamapping: Topography with state-of-the-art video technology

→ Requirements?

Requirements for the fitting:

1. Seminar: Attend a seminar on fitting Ortho-K lenses – be it a seminar of Appenzeller Kontaktlinsen or that of a competitor
2. Topographer
3. Video slit lamp – or possibility to take fluorescein pictures

→ Features?

The Ortho-K lenses from Appenzeller Kontaktlinsen are:

- four-curved
- double-reverse
- with aspherical landing zone

The different curves are blended progressively.

→ Product variations?

- Appenzeller Kontaktlinsen i-NIGHT
- Appenzeller Kontaktlinsen i-NIGHT Toric
- Appenzeller Kontaktlinsen i-NIGHT Multi
- Appenzeller Kontaktlinsen i-NIGHT Toric Multi

Little bowls of plastic – big window to the world.

i-SOFT



3-monthly soft contact lenses
My yearly supply of soft contact lenses.
Per eye.

Personnelle



Unifocale – Multifocale – Style de vie
numérique
My contact lens. As unique as my fingerprint.

Excellent AS Excellent MK



Single vision – Multifocal – Bifocal
Classic, practical, excellent:
You can count on this contact lens.

i-MAP AS



Single vision – Multifocal – Bifocal
High-tech for my everyday life:
Coping with any situation.

i-NIGHT



Orthokeratology at the highest level
Wear overnight – see during the day:
Without spectacles, without contact lenses.

Personnelle-KK Excellent-KK



Keratoconus contact lenses
High grade of keratoconus,
high demand: fits like a mould.

i-MAP



For fitting with irregular cornea
Fits when nothing else will.

i-MATRIX



Scleral lenses
Corneal damage, keratoconus,
keratoplasty? Still fits.

proASSIST



Professional support with progressive myopia
Smart contact lenses instead of thick
spectacle lenses.



passt.

COMFORT AND SAFETY

Our recommendations for the care of rigid gas permeable contact lenses:

Individual products or sets.

Compiled to your wishes.

Contact lenses are not just a product. Contact lenses are a process that begins with your consultation. And continues after a successful fitting. Because contact lenses need to be inserted and removed. And because they need to be cleaned and stored. That's why we don't just supply you with contact lenses made to order, but also with know-how made to order. This includes our Professional Service, which is there for you in word and action. It also includes care products and accessories that give your patients the greatest possible feeling of comfort, health and safety.

Clean and rinse, disinfect and store : This is the sequence. And accordingly, we offer you products that are precisely matched to each other in exactly the combination you want. Put together nicely as a set wrapped in thin transparent film, which can be removed without scissors.

Combination example:

- 1x Cleaner plus 1x Saline plus 1x Peroxid plus 1x Enzyme
- 1x Cleaner plus 1x Saline plus 1x All-in-One RGP

See also brochure Appenzeller Kontaktlinsen Comfort and safety

1. Cleaning Daily

Appenzeller Kontaktlinsen* Cleaner

Alcohol-based cleaner

For daily care of rigid gas-permeable contact lenses (also GP-plasma-coated) and soft contact lenses.

2. Rinsing Daily

Appenzeller Kontaktlinsen* Saline

Saline as inserting solution

For all types of contact lenses - except scleral lenses - and for rinsing of soft and rigid gas-permeable contact lenses. Both after cleaning the lens and before putting the lens on the eye.



3. Disinfection and storage Daily

Appenzeller Kontaktlinsen® Peroxyd

Disinfection and neutralisation in 1 hour

The disinfection and neutralisation can be carried out very simply, quickly and a 100% efficiently. Appenzeller Kontaktlinsen make it possible with this peroxide system. For conventional soft lenses, disposable lenses and rigid gas-permeable lenses (RGP)

Appenzeller Kontaktlinsen® All-in-One Soft

Disinfectant

For all those who do not opt for the peroxide system and its unusually rapid effect (see column on the left): All-in-One Soft – the multipurpose solution with sodium hyaluronate for longer effect, longer wearing time, longer feeling of comfort.

4. Protein removal Once a week

Appenzeller Kontaktlinsen® Enzyme

Intensive cleaning

Protein deposits build up on the lens every day. In addition to the daily neutralisation of the lenses, a weekly protein removal removing is needed when using the peroxide system.





passt.

Appenzeller Kontaktlinsen AG
Hauptstrasse 22
CH-9042 Speicher AR
Telephone +41 71 344 20 00

Appenzeller Kontaktlinsen AG
Kemptener Strasse 8
D-88131 Lindau
Telephone +49 69 332 962 31

Appenzeller Kontaktlinsen AG
Postfach 29
A-6973 Höchst
Telephone +43 72 088 16 97

info@appenzeller-kontaktlinsen.ch www.appenzeller-kontaktlinsen.ch

Rigid gas permeable
contact lenses

i-NIGHT

10 Reasons Why to choose Appenzeller Kontaktlinsen

→ Fitting success

We do everything we can to understand your wishes and ideas. So that your fitting is a complete success – for you and your patients.

→ Open ears

Our Professional Services team advises you competently, personally and patiently. They will answer every question and make sure you get the right contact lens in any case.

→ Price advantage

We offer you favourable terms of payment. You can get extra benefits if you pay in advance. We will happily let you know about the current conditions on request.

→ Technological advantage

We put a great deal of effort into Research & Development to ensure that our contact lenses always meet the latest technological possibilities.

→ Custom made

Each contact lens is individually made to order for you, so that it matches your specifications a 100%.

→ Guarantee scheme

We take responsibility for our work so you can rely on us and our contact lenses with guarantee. Guarantee period:

- *i*-SOFT 3-monthly lenses: 1 month
- 6-monthly lenses: 2 months
- 12-monthly lenses: 3 months

Broken lens: Return us the lens within the guarantee period and we will replace it. We will credit it on your next invoice accordingly. The date on the delivery note is decisive for the guarantee period.

→ Swiss made

We demand the highest standards of the manufacturing quality of our contact lenses, so that they match your equally high expectations of Swiss made.

→ Right to exchange

We send out our contact lenses with or without the right to exchange, so you can make the best choice for your needs. The option "with right to exchange" gives you financial security: you can order a different lens later. If you do so within the exchange period, you pay only a small excess. The date on the delivery note is decisive for the deadline.

- Soft contact lenses:
 - *i*-SOFT 3-monthly lenses: 1 month
 - 6-monthly lenses: 2 months
 - 12-monthly lenses: 3 months
- Rigid gas-permeable lenses: 3 months

→ Long-term vision

We strive for a lasting business relationship with you, so that you can also count on us in the long term.

→ Reproducibility

We help you keeping your patients satisfied by ensuring that you receive the same lens as before with your repeat order.



As a company we care for nature, and we have a packaging license from "Green Point".

© Appenzeller Kontaktlinsen AG | Subject to change | 2021-04
All trademarks are the property of Appenzeller Kontaktlinsen.